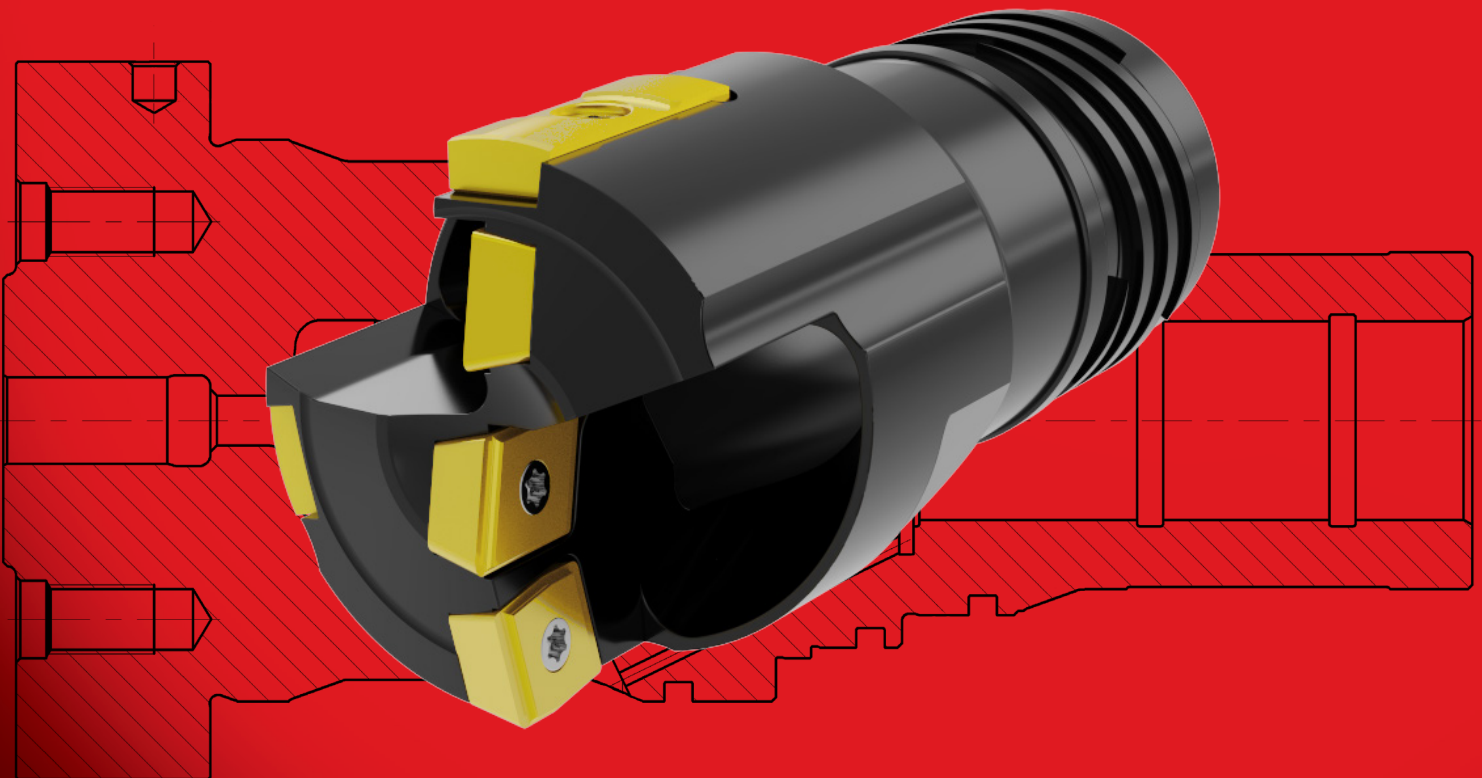




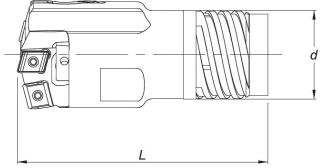
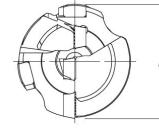
# DIRECTDEX SOLID DRILLING TOOLS

Diameter range 25 mm - 65 mm (0.984" - 2.559")



# DirectDex Single Tube System

Diameter Range: 25.00 mm – 65.00 mm (0.984" - 2.559")



Drill Head Part Numbering Code Example: Metric: DDSM02500M403 Imperial: DDS02500M403

DD		S		M02500		M		4		03	
DirectDex Prefix		Fluid Introduction		Bore Size		Connection Type		Thread Starts		Connection Size	
Description	Code	Description	Code	Description	Code	Description	Code	Description	Code	Description	Code
DirectDex	DD	Single-Tube	S	Size in Metric (###.## mm)	M#####	Male/ External	M	Four-Start	4	25.00 - 26.40 mm .984 - 1.039 in	03
				Size in Imperial ##.### in	#####						
				Example: 25.00 mm (1.000")	M02500 (01000)	Female/ Internal	F	Single-Start	1		

## Connection Size Numbering Code

Bore Size Range	25.00 - 26.40 mm	26.41 - 28.70 mm	28.71 - 31.00 mm	31.01 - 33.30 mm	33.31 - 36.20 mm	36.21 - 39.60 mm	39.61 - 43.00 mm	43.01 - 47.00 mm	47.01 - 51.70 mm	51.71 - 56.20 mm	56.21 - 65.00 mm	60.61-65.00 mm
	.984 - 1.039 in	1.040 - 1.129 in	1.130 - 1.220 in	1.221 - 1.311 in	1.312 - 1.425 in	1.426 - 1.559 in	1.560 - 1.693 in	1.694 - 1.850 in	1.851 - 2.035 in	2.036 - 2.212 in	2.213 - 2.559 in	2.386-2.554 in
Code	03	04	05	06	07	08	09	10	11	12	13	13E

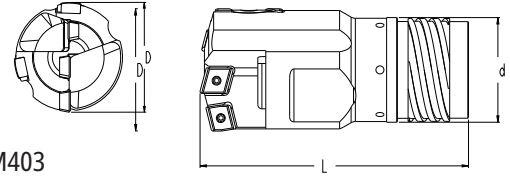
Drill	Item Code	Drill Tube	Dimensions		Item Code			
'D'			Tube OD 'd'	L	Peripheral	Center	Intermediate	Guide Pad
25.00 - 26.40 mm	DDSM####M403	03	22 mm	73 mm	BTDDN06PGU1TE	BTDDN05CGU1TE	BTDDN05IGU1TE	GPS0618DDTE
0.984 - 1.039 in	DDS####M403		0.866 in	2.755 in	800-06 03 08H-P-G	800-05 03 08M-C-G	800-05 03 08M-I-G	800-06A
26.41 - 28.70 mm	DDSM####M404	04	24 mm	74 mm	BTDDN06PGU1TE	BTDDN05CGU1TE	BTDDN05IGU1TE	GPS0618DDTE
1.04 - 1.129 in	DDS####M404		0.945 in	2.795 in	800-06 03 08H-P-G	800-05 03 08M-C-G	800-05 03 08M-I-G	800-06A
28.71 - 31.00 mm	DDSM####M405	05	26 mm	75 mm	BTDDN06PGU1TE	BTDDN06CGU1TE	BTDDN05IGU1TE	GPS0720DDTE
1.130 - 1.220 in	DDS####M405		1.024 in	2.95 in	800-06 03 08H-P-G	800-06 T3 08M-C-G	800-05 03 08M-I-G	800-06A
31.01 - 33.30 mm	DDSM####M406	06	28 mm	76 mm	BTDDN08PGU1TE	BTDDN06CGU1TE	BTDDN06IGU1TE	GPS0720DDTE
1.221 - 1.311 in	DDS####M406		1.102 in	2.992 in	800-08 T3 08H-P-G	800-06 T3 08M-C-G	800-06 T3 08M-I-G	800-07A
33.31 - 33.99mm	DDSM####M407	07	30 mm	77 mm	BTDDN08PGU1TE	BTDDN06CGU1TE	BTDDN06IGU1TE	GPS0720DDTE
1.312 - 1.338 in	DDS####M407		1.181 in	3.031 in	800-08 T3 08H-P-G	800-06 T3 08M-C-G	800-06 T3 08M-I-G	800-07A
34.00-34.99 mm	DDSM####M407		30 mm	77 mm	BTDDN08PGU1TE	BTDDN08CGU1TE	BTDDN08IGU1TE	GPS0720DDTE
1.339 - 1.377 in	DDS####M407		1.181 in	3.031 in	800-08 T3 08H-P-G	800-08 T3 08M-C-G	800-08 T3 08M-I-G	800-07A
35.00-36.20 mm	DDSM####M407		30.0 mm	77 mm	BTDDN08PGU1TE	BTDDN08CGU1TE	BTDDN08IGU1TE	GPS0720DDTE
1.378-1.425 in	DDS####M407		1.181 in	3.031 in	800-08 T3 08H-P-G	800-08 T3 08M-C-G	800-08 T3 08M-I-G	800-07A
36.21-38.99 mm	DDSM####M408	08	33 mm	89 mm	BTDDN09PGU1TE	BTDDN08CGU1TE	BTDDN08IGU1TE	GPS0720DDTE
1.426-1.535 in	DDS####M408		1.299 in	3.503 in	800-09 T3 08H-P-G	800-08 T3 08M-C-G	800-08 T3 08M-I-G	800-07A
39.00-39.60 mm	DDSM####M408		33.0 mm	89 mm	BTDDN09PGU1TE	BTDDN08CGU1TE	BTDDN08IGU1TE	GPS0825DDTE
1.536-1.559 in	DDS####M408	1.299 in	3.503 in	800-09 T3 08H-P-G	800-08 T3 08M-C-G	800-08 T3 08M-I-G	800-08A	
39.61-43.00 mm	DDSM####M409	09	36.0 mm	93 mm	BTDDN09PGU1TE	BTDDN10CGU1TE	BTDDN08IGU1TE	GPS0825DDTE
1.560-1.692 in	DDS####M409		1.417 in	3.661 in	800-09 T3 08H-P-G	800-10 T3 08M-C-G	800-08 T3 08M-I-G	800-08A
43.01-47.00 mm	DDSM####M410	10	39 mm	95 mm	BTDDN09PGU1TE	BTDDN12CGU1TE	BTDDN08IGU1TE	GPS1030DDTE
1.693-1.850 in	DDS####M410		1.535 in	3.740 in	800-09 T3 08H-P-G	800-12 T3 08M-C-G	800-08 T3 08M-I-G	800-10A
47.01-49.99 mm	DDSM####M411	11	43 mm	102 mm	BTDDN11PGU1TE	BTDDN10CGU1TE	BTDDN08IGU1TE	GPS1030DDTE
1.851-1.968 in	DDS####M411		1.692 in	4.015 in	800-11 T3 08H-P-G	800-10 T3 08M-C-G	800-08 T3 08M-I-G	800-10A
50.00-51.70 mm	DDSM####M411		43 mm	102 mm	BTDDN11PGU1TE	BTDDN10CGU1TE	BTDDN08IGU1TE	GPS1030DDTE
1.969-2.035 in	DDS####M411	1.696 in	4.015 in	800-11 T3 08H-P-G	800-10 T3 08M-C-G	800-08 T3 08M-I-G	800-10A	
51.71-54.99 mm	DDSM####M412	12	47 mm	110 mm	BTDDN11PGU1TE	BTDDN10CGU1TE	BTDDN12IGU1TE	GPS1235DDTE
2.036-2.165 in	DDS#### M412		1.850 in	4.330 in	800-11 T3 08H-P-G	800-10 T3 08M-C-G	800-12 T3 08M-I-G	800-12A
55.00-56.20 mm	DDSM#### M412		47.0 mm	110 mm	BTDDN11PGU1TE	BTDDN10CGU1TE	BTDDN12IGU1TE	GPS1235DDTE
2.166-2.212 in	DDS#### M412	1.850 in	4.330 in	800-11 T3 08H-P-G	800-10 T3 08M-C-G	800-12 T3 08M-I-G	800-12A	
56.21-57.99 mm	DDSM#### M413	13	51 mm	115 mm	BTDDN11PGU1TE	BTDDN10CGU1TE	BTDDN12IGU1TE	GPS1235DDTE
2.213-2.283 in	DDS#### M413		2.008 in	4.527 in	800-11 T3 08H-P-G	800-12 T3 08M-C-G	800-12 T3 08M-I-G	800-12A
58.00-65.00 mm	DDSM#### M413		51 mm	115 mm	BTDDN11PGU1TE	BTDDN10CGU1TE	BTDDN12IGU1TE	GPS1235DDTE
2.284-2.559 in	DDS#### M413	2.008 in	4.527 in	800-11 T3 08H-P-G	800-12 T3 08M-C-G	800-12 T3 08M-I-G	800-12A	

Sandvik Coromant part number shown in Red

Sunnen DirectDex Inserts are available with both "G" and "L" chipbreakers. Additional carbide grades are available, please contact your Sunnen sales representative.

# DirectDex Double Tube System

Diameter Range: 25.00 mm – 65.00 mm (0.984" - 2.559")



Drill Head Part Numbering Code Example: Metric: DDDM02500M403 Imperial: DDD02500M403

DD		D		M02500		M		4		03	
DirectDex Prefix		Fluid Introduction		Bore Size (x#####)		Connection Type		Thread Starts		Connection Size	
Description	Code	Description	Code	Description	Code	Description	Code	Description	Code	Description	Code
DirectDex	DD	Double-Tube	D	Size in Metric (###.## mm)	M#####	Male/ External	M	Four-Start	4	25.00 - 26.40 mm .984 - 1.039 in	03
				Size in Imperial (##.### in)	#####						
				Example: 25.00 mm (1.000")	M02500 (01000)	Female/ Internal	F	Single-Start	1		

## Connection Size Numbering Code

Bore Size Range	25.00 - 26.40 mm	26.41 - 28.70 mm	28.71 - 31.00 mm	31.01 - 33.30 mm	33.31 - 36.20 mm	36.21 - 39.60 mm	39.61 - 43.00 mm	43.01 - 47.00 mm	47.01 - 51.70 mm	51.71 - 56.20 mm	56.21 - 65.00 mm
	.984 - 1.039 in	1.040 - 1.129 in	1.130 - 1.220 in	1.221 - 1.311 in	1.312 - 1.425 in	1.426 - 1.559 in	1.560 - 1.693 in	1.694 - 1.850 in	1.851 - 2.035 in	2.036 - 2.212 in	2.213 - 2.559 in
Code	03	04	05	06	07	08	09	10	11	12	13

Drill	Item Code	Outer Drill Tube	Dimensions		Item Code			
'D'			Tube OD 'd'	L	Peripheral	Center	Intermediate	Guide Pad
25.00 - 26.40 mm	DDDM#####M403	03	23.50mm	67.20mm	BTDDN06PGU1TE	BTDDN05CGU1TE	BTDDN05IGU1TE	GPS0618DDTE
0.984 - 1.039 in	DDD#####403		0.925 in	2.645 in	800-06 03 08H-P-G	800-05 03 08M-C-G	800-05 03 08M-I-G	800-06A
26.41 - 28.70 mm	DDDM#####M404	04	26 mm	72 mm	BTDDN06PGU1TE	BTDDN05CGU1TE	BTDDN05IGU1TE	GPS0618DDTE
1.04 - 1.129 in	DDD#####404		1.024 in	2.835 mm	800-06 03 08H-P-G	800-05 03 08M-C-G	800-05 03 08M-I-G	800-06A
28.71 - 31.00 mm	DDDM#####M405	05	28 mm	74 mm	BTDDN06PGU1TE	BTDDN06CGU1TE	BTDDN05IGU1TE	GPS0720DDTE
1.130 - 1.220 in	DDD#####405		1.102 in	2.913 in	800-06 03 08H-P-G	800-06 T3 08M-C-G	800-05 03 08M-I-G	800-06A
31.00 - 33.30 mm	DDDM#####M406	06	30.5 mm	75 mm	BTDDN08PGU1TE	BTDDN06CGU1TE	BTDDN06IGU1TE	GPS0720DDTE
1.220 - 1.311 in	DDD#####406		1.201 in	2.952 in	800-08 T3 08H-P-G	800-06 T3 08M-C-G	800-06 T3 08M-I-G	800-07A
33.31 - 33.99 mm	DDDM#####M407	07	33 mm	83 mm	BTDDN08PGU1TE	BTDDN06CGU1TE	BTDDN06IGU1TE	GPS0720DDTE
1.311 - 1.338 in	DDD#####407		1.299 in	3.267 in	800-08 T3 08H-P-G	800-06 T3 08M-C-G	800-06 T3 08M-I-G	800-07A
34.00 - 34.99 mm	DDDM#####M407		33 mm	83 mm	BTDDN08PGU1TE	BTDDN08CGU1TE	BTDDN08IGU1TE	GPS0720DDTE
1.339 - 1.377 in	DDD#####407		1.299 in	3.267 in	800-08 T3 08H-P-G	800-08 T3 08M-C-G	800-08 T3 08M-I-G	800-07A
35.00 - 36.20 mm	DDDM#####M407		33mm	83mm	BTDDN08PGU1TE	BTDDN08CGU1TE	BTDDN08GU1TE	GPS0720DDTE
1.378 - 1.425mm	DDD#####M407		1.299in	3.267 in	800-08 T3 08H-P-G	800-08 T3 08M-C-G	800-08 T3 08M-I-G	800-07A
36.21 - 38.99 mm	DDDM#####M408	08	35.50 mm	88 mm	BTDDN08PGU1TE	BTDDN08CGU1TE	BTDDN08IGU1TE	GPS0720DDTE
1.426 - 1.535 in	DDD#####408		1.398 in	3.464 in	800-08 T3 08H-P-G	800-08 T3 08M-C-G	800-08 T3 08M-I-G	800-07A
39.00 - 39.60 mm	DDDM#####M408		35.50 mm	88 mm	BTDDN09PGU1TE	BTDDN08CGU1TE	BTDDN08IGU1TE	GPS0720DDTE
1.536 - 1.559 in	DDD#####408	1.398 in	3.464 in	800-09 T3 08H-P-G	800-08 T3 08M-C-G	800-08 T3 08M-I-G	800-07A	
39.61 - 43.00 mm	DDDM#####M409	09	39 mm	92 mm	BTDDN09PGU1TE	BTDDN08CGU1TE	BTDDN08IGU1TE	GPS0825DDTE
1.559 - 1.692 in	DDD#####409		1.535 in	3.622 in	800-09 T3 08H-P-G	800-08 T3 08M-C-G	800-08 T3 08M-I-G	800-08A
43.01 - 47.00 mm	DDDM#####M410	10	42.5 mm	94 mm	BTDDN09PGU1TE	BTDDN10GU1TE	BTDDN08IGU1TE	GPS0825DDTE
1.693 - 1.850 in	DDD#####410		1.673 in	3.700 in	800-09 T3 08H-P-G	800-10 T3 08M-C-G	800-08 T3 08M-I-G	800-08A
47.01 - 49.99 mm	DDDM#####M411	11	46.5 mm	104 mm	BTDDN09PGU1TE	BTDDN12CGU1TE	BTDDN08IGU1TE	GPS1030DDTE
1.851 - 1.968 in	DDD#####411		1.831 in	4.094 in	800-09 T3 08H-P-G	800-12 T3 08M-C-G	800-08 T3 08M-I-G	800-10A
50.00 - 51.70 mm	DDDM#####M411		46.5 mm	104 mm	BTDDN11PGU1TE	BTDDN10CGU1TE	BTDDN08IGU1TE	GPS1030DDTE
1.968 - 2.035 in	DDD#####411	1.831 in	4.094 in	800-11 T3 08H-P-G	800-10 T3 08M-C-G	800-08 T3 08M-I-G	800-10A	
51.71 - 54.99 mm	DDDM#####M412	12	51 mm	109 mm	BTDDN11PGU1TE	BTDDN10CGU1TE	BTDDN08IGU1TE	GPS1030DDTE
2.036 - 2.165 in	DDD#####412		2.008 in	4.291 in	800-11 T3 08H-P-G	800-10 T3 08M-C-G	800-08 T3 08M-I-G	800-10A
55.00 - 56.20 mm	DDDM#####M412	12	51 mm	109 mm	BTDDN11PGU1TE	BTDDN10CGU1TE	BTDDN12IGU1TE	GPS1235DDTE
2.166 - 2.211 in	DDD#####412		2.008 in	4.291 in	800-11 T3 08H-P-G	800-10 T3 08M-C-G	800-12 T3 08M-I-G	800-12A
56.21 - 57.99 mm	DDDM#####M413	13	55.5 mm	113,30 mm	BTDDN11PGU1TE	BTDDN10CGU1TE	BTDDN12IGU1TE	GPS1235DDTE
2.212 - 2.283 in	DDD#####413		2.185 in	4.460 in	800-11 T3 08H-P-G	800-10 T3 08M-C-G	800-12 T3 08M-I-G	800-12A
58.00 - 65.00 mm	DDDM#####M413		55.5 mm	113,30 mm	BTDDN11PGU1TE	BTDDN12CGU1TE	BTDDN12IGU1TE	GPS1235DDTE
2.284 - 2.559 in	DDD#####413	2.185 in	4.460 in	800-11 T3 08H-P-G	800-12 T3 08M-C-G	800-12 T3 08M-I-G	800-12A	

Sandvik Coromant part number shown in Red

Sunnen DirectDex Inserts are available with both "G" and "L" chipbreakers. Additional carbide grades are available, please contact your Sunnen sales representative.

# Easy-to-use, efficient, heavy-duty

- **Available in three standard models**
  - 2-meter maximum part length (SHD-2500D)
  - 4-meter maximum part length (SHD-4500D)
  - 6-meter maximum part length (SHD-6500D)
- Large 394 mm (15.5 in) color HMI with intuitive controls for ease of use.
- Heavy-duty Bosch-Rexroth 55 mm (2.16 in) linear rails for maximum durability.
- Standard safety system with a combination of multiple E-stops, light curtains, interlocked guarding and fencing.
- 67 kw (90 hp) tool motor with headstock drive for optimum power.
- Beckhoff servo driven heavy-duty ball screws for tool feed.
  - 80 mm ball screw (3.15 in) SHD 2500D / 4500D
  - 100 mm ball screw (3.84 in) SHD 6500D
- Electrical enclosure air conditioning unit standard to protect critical electronics in high temperature environments.
- Heavy-duty welded base.
- Heavy-duty 3-jaw chucks standard.
- Automatic lubrication system for ball screw, rack and pinion, and linear rails standard.
- Heavy-duty servo rack and pinion driven work piece positioning and clamping.
- Spindle carriage control station for ease of driveshaft installation.
- Sunnen is the complete system supplier ... machines, tools, chip management, cooling systems and cutting fluids.
- Standard 38 kw (50 HP) workpiece headstock drive (counter rotation).



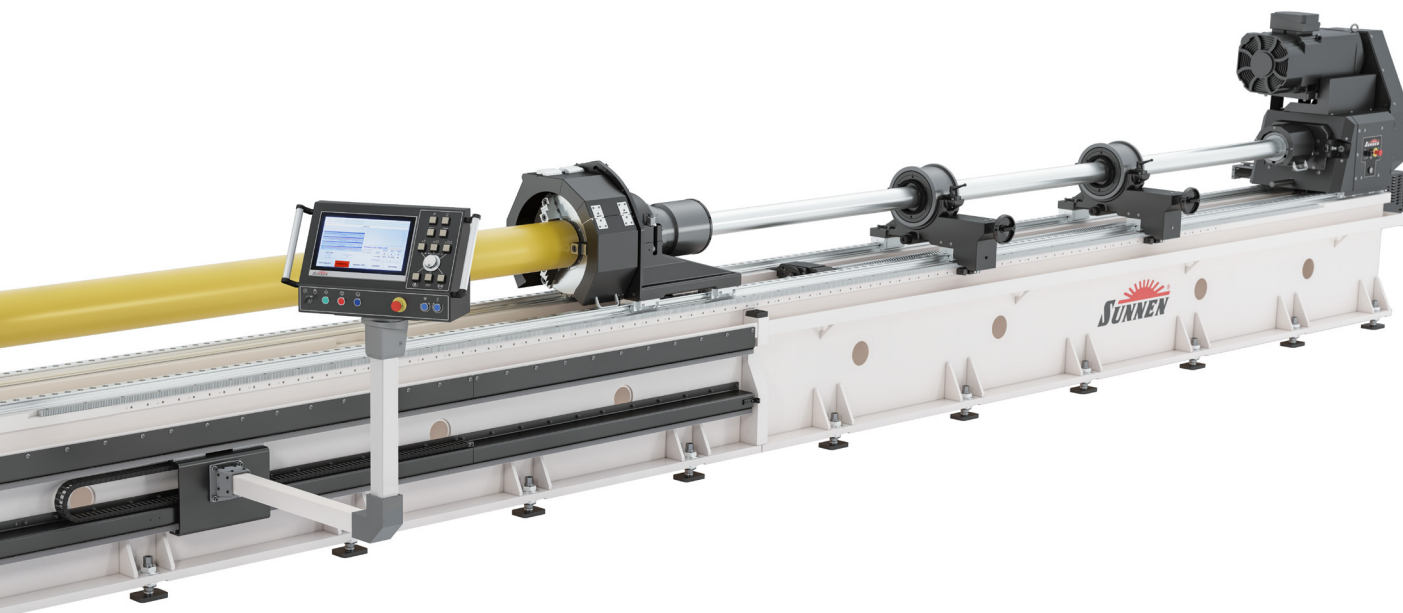
# Sunnen Designed and Developed Intuitive Control System

## Features include:

- Beckhoff PLC with 394 mm (15.5 in) color touchscreen
- All machine functions controlled from the operator station
- Real time graphical display of tool position, tool feed load, spindle loads, and coolant pressure and volume
- Two-button part-to-part mode for high production operation
- Slow start tool feed for setup
- Tool protection function
- USB port for ease of backup
- Metric/inch units screen selectable
- Up to 500 part setups can be saved and retrieved



- Machine diagnostics
- On-screen, multi-language selection

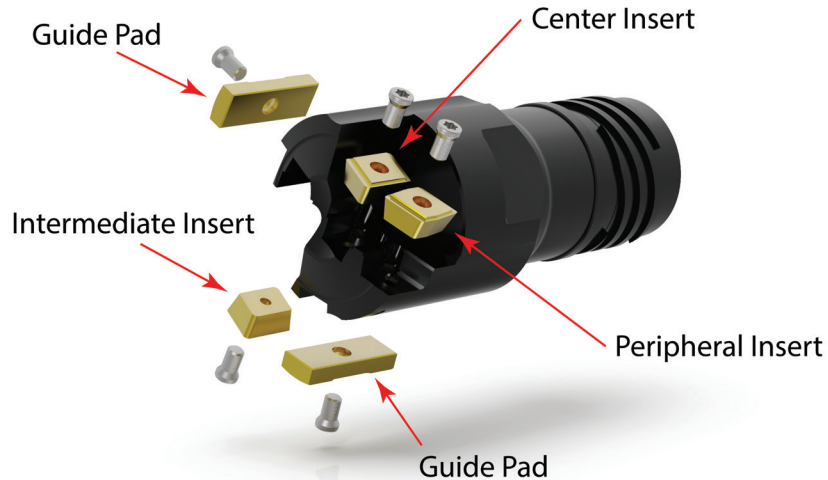


# Heavy-Duty Sunnen Designed and Built Coolant System

## Features include:

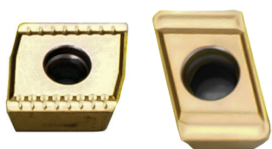
- Modular clean and dirty tanks with 6245 liter (1650 gallon) maximum capacity and 3765 liter (1000 gallon) operating capacity
- Heavy-duty welded construction using 4.75 mm (.187 in) plate with a double wall option available
- High flow 10-micron, four-bag filtration system
- Heavy-duty screw type pump with 757 lpm (200 gpm) max flow and 5.2MPa (750 psig) max pressure
- 70-micron inlet filter
- Standard chiller for hot environments
- Designed for maintainability with multiple level sensors, clean-out ports and instrumentation
- Heavy-duty chip conveyor
- Active coolant level monitoring

# Insert and Guide Pad Sizes



Cutting Diameter Range	Peripheral	Cutting Diameter Range	Center	Cutting Diameter Range	Intermediate	Cutting Diameter Range	Guide Pad
25.00 - 31.00 mm	BTDDN06PGU1TE	25.00 - 28.70 mm	BTDDN05CGU1TE	25.00 - 31.00 mm	BTDDN05IGU1TE	25.00 - 31.00 mm	GPS0618DDTE
0.984 - 1.220 inch	800-06 03 08H-P-G Screw PHSM1151 5513 020 05	0.984 - 1.130 inch	800-05 03 08M-C-G Screw PHSM1151 5513 020 05	0.984 - 1.220 inch	800-05 03 08M-I-G Screw PHSM1151 5513 020 05	0.984 - 1.220 inch	800-06A Screw PHSM1152 5513 020 20
31.01 - 38.99 mm	BTDDN08PGU1TE	28.71 - 33.99 mm	BTDDN06CGU1TE	31.01 - 34.99 mm	BTDDN06IGU1TE	31.01 - 39.60 mm	GPS0720DDTE
1.220 - 1.535 inch	800-08 T3 08H-P-G Screw PHSM1153 5513 020 34	1.113 - 1.338 inch	800-06 T3 08M-C-G Screw PHSM1153 5513 020 34	1.220 - 1.377 inch	800-06 T3 08M-I-G Screw PHSM 1153 5513 020 34	1.220 - 1.559 inch	800-07A Screw PHSM1155 416.1-832
39.00 - 49.99 mm	BTDDN09PGU1TE	34.00 - 43.00 mm	BTDDN08CGU1TE	35.00 - 54.99 mm	BTDDN08IGU1TE	39.61 - 47.00 mm	GPS0825DDTE
1.535 - 1.968 inch	800-09 T3 08H-P-G Screw PHSM1153 5513 020 34	1.339 - 1.692 inch	800-08 T3 08M-C-G Screw PHSM1153 5513 020 34	1.378 - 2.164 inch	800-08 T3 08M-I-G Screw PHSM1153 5513 020 34	1.559 - 1.850 inch	800-08A Screw PHSM1156 5513 020 16
50.00 - 65.00 mm	BTDDN11PGU1TE	43.01 - 47.00 mm	BTDDN10CGU1TE	55.00 - 65.00 mm	BTDDN12IGU1TE	47.01 - 54.99 mm	GPS1030DDTE
1.968 - 2.559 inch	800-11 T3 08H-P-G Screw PHSM1153 5513 020 34	1.693 - 1.850 inch	800-10 T3 08M-C-G Screw PHSM1153 5513 020 34	2.165 - 2.559 inch	800-12 T3 08M-I-G Screw PHSM1153 5513 020 34	1.85 - 2.164 inch	800-10A Screw PHSM1157 416.1-833
		47.01 - 49.99 mm	BTDDN12CGU1TE			55.00 - 65.00 mm	GPS1235DDTE
		1.850 - 1.968 inch	800-12 T3 08M-C-G Screw PHSM1153 5513 020 34			2.165 - 2.559 inch	800-12A Screw PHSM1157 416.1-833
		50.00 - 57.99 mm	BTDDN10CGU1TE				
		1.969 - 2.283 inch	800-10 T3 08M-C-G Screw PHSM1153 5513 020 34				
		58.00 - 65.00 mm	BTDDN12CGU1TE				
		2.283 - 2.559 inch	800-12 T3 08M-C-G Screw PHSM1153 5513 020 34				

Peripheral



Intermediate



Center



Guide Pad



# More Deep Hole Drilling Solutions from Sunnen

Sunnen is committed to designing, manufacturing, and delivering world class deep hole machining tools and systems that meet or exceed customer requirements.

Whether a Single Tube, Double Tube, Gun Drilling or other specialty system is needed, Sunnen has the engineering expertise and manufacturing capabilities to meet any deep hole machining requirements.



## MicroDex – Solid Drilling

STS	DTS
Diameter Range	Diameter Range
15.97 – 28,00 mm	18.40 – 28,00 mm
0.724 – 1.102 inch	0.628 – 1.102 inch



## HellerDex – Solid Drilling

STS	DTS
Diameter Range	Diameter Range
38.00 – 233.00 mm	38.00 – 184.00 mm
1.496 – 9.173 inch	1.496 -7.240 inch



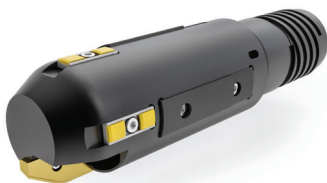
## Stabilizer - Trepanning

STS
Diameter Range
38.00 – 233.00 mm
1.496-9.173 inch



## Push Counterbore – Counterboring

STS	DTS
Diameter Range	Diameter Range
25.40 – 762 mm	25.40 – 184.00 mm
1.000 – 30.000 inch	1.000 – 7.240 inch



## Form Solution

STS	DTS
Made to Order	Made to Order



A LEGACY OF EXCELLENCE SINCE 1924.

## SUNNEN WORLDWIDE



With world headquarters in St. Louis, Missouri, Sunnen is the largest fully integrated company in the world specializing in precision bore creation, sizing and finishing equipment. A Sunnen solution might include honing, lapping, skiving/roller burnishing or deep hole machining...or a combination of those processes.

Our 13 international subsidiaries and over 40 authorized distributors allow us to deliver top quality Sunnen machines, tools, service and training wherever they are needed around the globe.

### Sunnen Products Company

World Headquarters  
St. Louis, MO – USA

Phone (314) 781-2100  
Fax (314) 781-2268  
Toll Free (800) 325-3670  
Email [sunnen@sunnen.com](mailto:sunnen@sunnen.com)  
[www.sunnen.com](http://www.sunnen.com)

Sunnen reserves the right to change or revise specifications and product design in connection with any feature of our products contained herein. Such changes do not entitle the buyer to corresponding changes, improvements, additions, or replacements for equipment, supplies or accessories previously sold. Information contained herein is considered to be accurate based on available information at the time of printing. Should any discrepancy of information arise, Sunnen recommends that user verify the discrepancy with Sunnen before proceeding.

#### Czech Republic – Sunnen s.r.o.

Phone +420 383 376 317  
Fax +420 383 376 316  
Email [sunnen@sunnen.cz](mailto:sunnen@sunnen.cz)  
[www.sunnen.cz](http://www.sunnen.cz)

#### France – Sunnen SAS

Phone +33 01 69 30 0000  
Fax +33 01 69 30 1111  
Email [info@sunnen.fr](mailto:info@sunnen.fr)  
[www.sunnen.fr](http://www.sunnen.fr)

#### India – Sunnen India Pvt. Ltd.

Phone +91 223 913 6055  
Fax +91 223 913 6056  
Email [sales@sunnen.in](mailto:sales@sunnen.in)  
[www.sunnen.in](http://www.sunnen.in)

#### Italy – Sunnen Italia S.r.l.

Phone +39 02 383 417 1  
Fax +39 02 383 417 50  
Email [sunnen@sunnenitalia.com](mailto:sunnen@sunnenitalia.com)  
[www.sunnenitalia.com](http://www.sunnenitalia.com)

#### Poland – Sunnen Polska Sp. z o.o.

Phone +48 22 814 34 29  
Fax +48 22 814 34 28  
Email [sunnen@sunnen.pl](mailto:sunnen@sunnen.pl)  
[www.sunnen.pl](http://www.sunnen.pl)

#### Russia – Sunnen RUS

Phone +7 495 258 43 43  
Fax +7 495 258 91 75  
Email [sunnen@sunnen-russia.ru](mailto:sunnen@sunnen-russia.ru)  
[www.sunnen.ru](http://www.sunnen.ru)

#### Switzerland – Sunnen AG

Phone +41 71 649 33 33  
Email [sales@sunnen.eu](mailto:sales@sunnen.eu)  
[www.sunnen.eu](http://www.sunnen.eu)

#### UK – Sunnen Products Ltd.

Phone +44 1442 39 39 39  
Fax +44 1442 39 12 12  
Email [hemel@sunnen.co.uk](mailto:hemel@sunnen.co.uk)

#### Austria – Sunnen Austria GmbH

Phone +43 (0) 5576 74194  
Fax +43 (0) 5576 74196  
Email [sales@sunnen.eu](mailto:sales@sunnen.eu)  
[www.sunnen.at](http://www.sunnen.at)

#### Belgium – Sunnen Benelux BVBA

Phone +32 38 80 2800  
Fax +32 38 44 3901  
Email [info@sunnen.be](mailto:info@sunnen.be)  
[www.sunnen.be](http://www.sunnen.be)

#### Brazil – Sunnen do Brasil LTDA.

Phone +55 11 4368-4900  
Email [sunnen@sunnen.com.br](mailto:sunnen@sunnen.com.br)  
[www.sunnen.com.br](http://www.sunnen.com.br)

#### Canada – Sunnen Products Company

Phone 844-356-0006  
Email [canadasales@sunnen.com](mailto:canadasales@sunnen.com)  
[www.sunnen.com/canada](http://www.sunnen.com/canada)

#### China – Shanghai Sunnen Mechanical Co. Ltd.

Phone +86 21 5813 3990  
Fax +86 21 5813 2299  
Email [shsunnen@sunnensh.com](mailto:shsunnen@sunnensh.com)  
[www.sunnensh.com](http://www.sunnensh.com)